

# WEL3224

## SMD Trimmer 4mm Multi-Turn



### Features:

- Surface Mount
- 4mm Square Multi-Turn
- Cermet / Industrial / Sealed

### Electrical Characteristics:

Standard Resistance Range:  
10 to 2 megaohms  
(see standard resistance table)

Resistance Tolerance:  
+-10% std.  
(tighter tolerance available)

Absolute Minimum Resistance:  
1% or 2 ohms max.  
(whichever is greater)

Contact Resistance Variation:  
3% or 3 ohms max.  
(whichever is greater)

Resolution:  
Essentially Infinite

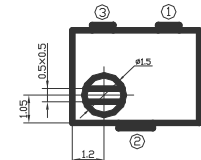
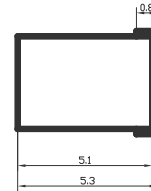
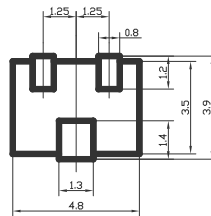
Insulation Resistance:  
500VDC  
1,000 megaohms min.

Dielectric Strength:  
101.3 kPa 600VAC  
8.5 kPa 250VAC

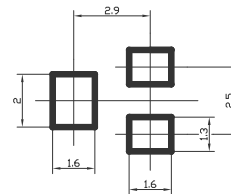
Effective Travel:  
**11 turns nom.**

### WEL3224-W

Top Adjustment / Horizontal



RECOMMENDED PCB LAYOUT



### Environmental Characteristics:

Power Rating (200V max.):  
0.25 watt (70°C), 0 watt (125°C)

Temperature Range:  
-55°C to +125°C

Temperature Coefficient:  
+-100ppm/°C

Vibration:  
98m/s<sup>2</sup>  
(1% ΔTR; 1% ∇VR)

Shock:  
490m/s<sup>2</sup>  
(1% ΔTR; 1% ∇VR)

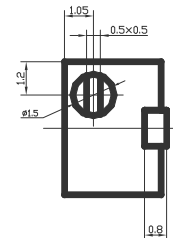
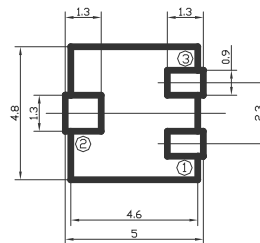
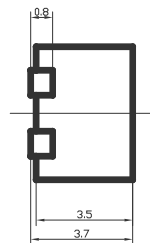
Load Life:  
1,000 hours 0.25 watt @ 70°C  
(3% ΔTR; 3% or 3 ohms, whichever is greater, CRV)

Rotational Life:  
200 cycles  
(3% ΔTR; 3% or 3 ohms, whichever is greater, CRV)

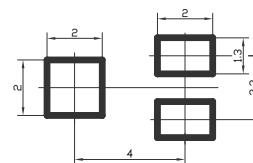
Thermal Shock:  
5 cycles  
(2% ΔTR; 2% ∇VR)

### WEL3224-J

Side Adjustment / Vertical



RECOMMENDED PCB LAYOUT

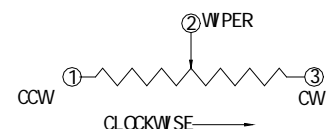


### Electrical Characteristics:

Torque:  
25mN • m max.

Mechanical Stops:  
Wiper idles

Wiper:  
Set at 50% nominal



# WEL3224

## SMD Trimmer 4mm Multi-Turn



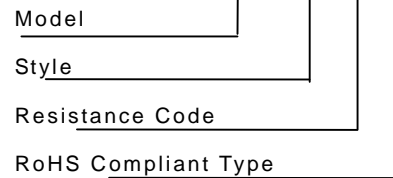
### Standard Resistance Table:

Value	Code	Value	Code
10 R	100	20 K	203
20 R	200	25 K	253
50 R	500	50 K	503
100 R	101	100 K	104
200 R	201	200 K	204
500 R	501	250 K	254
1 K	102	500 K	504
2 K	202	1 M	105
5 K	502	2 M	205
10 K	103		

Special resistance available  
TCR of shaded values:  $\pm 250\text{ppm}/^\circ\text{C}$   
Detail Specification: Q/R Y515-2003

### How To Order:

**WEL3224-W-102-LF**



Standard Packaging:  
250pcs per reel

### Reflow Soldering Curve:

