

# Plug-In RF Transformer

50Ω 0.2 to 350 MHz

## T4-1-X65+ T4-1-X65



CASE STYLE: X65  
PRICE: \$3.25 ea. QTY (1-9)

**+ RoHS compliant in accordance with EU Directive (2002/95/EC)**

*The +Suffix identifies RoHS Compliance. See our web site for RoHS Compliance methodologies and qualifications.*

### Maximum Ratings

|                       |               |
|-----------------------|---------------|
| Operating Temperature | -20°C to 85°C |
| Storage Temperature   | 55°C to 100°C |
| RF Power              | 0.25W         |
| DC Current            | 30mA          |

### Pin Connections

|               |   |
|---------------|---|
| PRIMARY DOT   | 4 |
| PRIMARY       | 6 |
| SECONDARY DOT | 3 |
| SECONDARY     | 1 |
| SECONDARY CT  | 2 |
| NOT USED      | 5 |

### Features

- wideband, 0.2 to 350 MHz
- good return loss
- also available with flat-pack (W38) & surface mount gull-wing (KK81) leads

### Applications

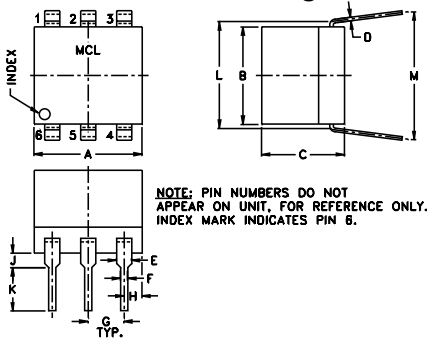
- impedance matching
- receivers/transmitters
- balance antennas

### Transformer Electrical Specifications

| Ω<br>RATIO<br>(Secondary/Primary) | FREQUENCY<br>(MHz) | INSERTION LOSS* |             |             |
|-----------------------------------|--------------------|-----------------|-------------|-------------|
|                                   |                    | 3 dB<br>MHz     | 2 dB<br>MHz | 1 dB<br>MHz |
| 4                                 | 0.2-350            | 0.2-350         | 0.35-300    | 2-100       |

\*Insertion Loss is referenced to mid-band loss, 0.6 dB typ.

### Outline Drawing



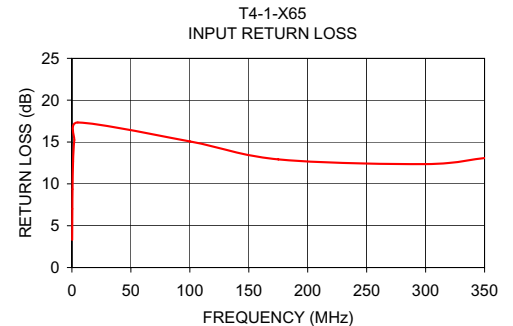
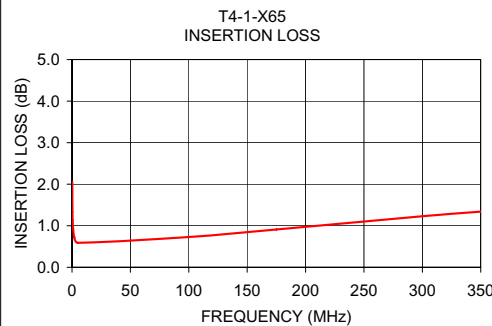
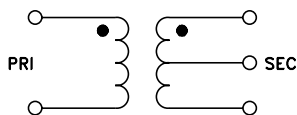
### Outline Dimensions (inch/mm)

| A    | B    | C    | D    | E    | F     | G    |
|------|------|------|------|------|-------|------|
| .30  | .27  | .23  | .010 | .042 | .020  | .100 |
| 7.62 | 6.86 | 5.84 | 0.25 | 1.07 | 0.51  | 2.54 |
| H    | J    | K    | L    | M    | wt    |      |
| .05  | .04  | .11  | .300 | .35  | grams |      |
| 1.27 | 1.02 | 2.79 | 7.62 | 8.89 | 0.50  |      |

### Typical Performance Data

| FREQUENCY<br>(MHz) | INSERTION<br>LOSS<br>(dB) | INPUT<br>R. LOSS<br>(dB) |
|--------------------|---------------------------|--------------------------|
| 0.20               | 2.06                      | 3.31                     |
| 0.35               | 1.33                      | 7.01                     |
| 0.50               | 1.13                      | 9.36                     |
| 1.00               | 0.92                      | 12.67                    |
| 2.00               | 0.72                      | 15.24                    |
| 5.00               | 0.59                      | 17.34                    |
| 100.00             | 0.73                      | 15.07                    |
| 175.10             | 0.91                      | 12.93                    |
| 300.00             | 1.23                      | 12.36                    |
| 350.00             | 1.34                      | 13.08                    |

### Config. A



**Mini-Circuits®**  
ISO 9001 ISO 14001 CERTIFIED

ALL NEW  
minicircuits.com

P.O. Box 350166, Brooklyn, New York 11235-0003 (718) 934-4500 Fax (718) 332-4661 For detailed performance specs & shopping online see Mini-Circuits web site



The Design Engineers Search Engine Provides ACTUAL Data Instantly From MINI-CIRCUITS At: [www.minicircuits.com](http://www.minicircuits.com)

RF/IF MICROWAVE COMPONENTS

REV. A  
M98898  
T4-1-X65  
IG/TD/CP  
070802