

Plug-In RF Transformer

50Ω 0.1 to 200 MHz

T-622-X65+ T-622-X65



CASE STYLE: X65
PRICE: \$3.25 ea. QTY (1-9)

+ RoHS compliant in accordance
with EU Directive (2002/95/EC)

The +Suffix identifies RoHS Compliance. See our web site
for RoHS Compliance methodologies and qualifications.

Maximum Ratings

Operating Temperature	-20°C to 85°C
Storage Temperature	55°C to 100°C
RF Power	0.25W
DC Current	30mA

Pin Connections

PRIMARY DOT	X1,Y2,Z3
PRIMARY	X6,Y5,Z4

Features

- single-ended to balanced with impedance ratio selection
- also available with flat pack (W38)
& surface mount gull-wing (KK81) leads

Applications

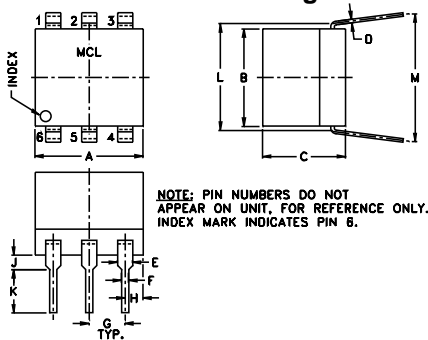
- HF/VHF
- test equipment

Transformer Electrical Specifications

Ω RATIO	FREQUENCY (MHz)	INSERTION LOSS*		
		3 dB MHz	2 dB MHz	1 dB MHz
1:1:1	0.1-200	0.1-200	0.5-100	5-80

* Insertion Loss is referenced to mid-band loss, 0.4 dB typ.

Outline Drawing



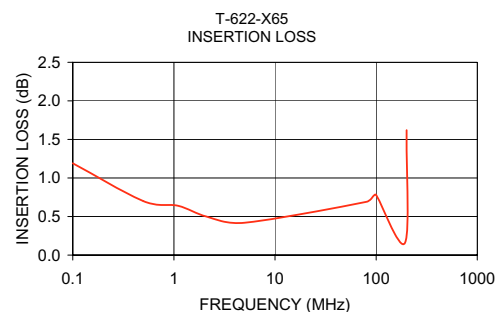
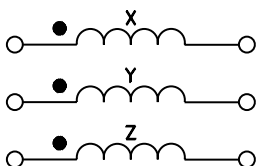
Outline Dimensions (inch)

A	B	C	D	E	F	G
.30	.27	.23	.010	.042	.020	.100
7.62	6.86	5.84	0.25	1.07	0.51	2.54
H	J	K	L	M	wt	
.05	.04	.11	.300	.35	grams	
1.27	1.02	2.79	7.62	8.89	0.50	

Typical Performance Data

FREQUENCY (MHz)	INSERTION LOSS (dB)	INPUT R. LOSS (dB)
0.10	1.19	7.87
0.50	0.70	17.40
1.10	0.64	20.99
2.10	0.50	24.10
5.00	0.42	26.99
80.00	0.69	14.78
93.05	0.76	13.92
100.00	0.78	13.50
193.00	0.16	8.19
200.00	1.62	8.08

Config. F



Mini-Circuits®
ISO 9001 ISO 14001 CERTIFIED

ALL NEW
minicircuits.com

P.O. Box 350166, Brooklyn, New York 11235-0003 (718) 934-4500 Fax (718) 332-4661 For detailed performance specs & shopping online see Mini-Circuits web site



The Design Engineers Search Engine Provides ACTUAL Data Instantly From MINI-CIRCUITS At: www.minicircuits.com

RF/IF MICROWAVE COMPONENTS

REV. B
M98898
T-622-X65
IG/TD/CP
070515