

Low Pass Filter

PLP-70+

50Ω DC to 60 MHz

Maximum Ratings

Operating Temperature	-55°C to 100°C
Storage Temperature	-55°C to 100°C
RF Power Input	0.5W max.

Pin Connections

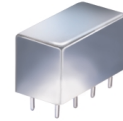
INPUT	1
OUTPUT	8
GROUND	2,3,4,5,6,7
CASE GROUND	2,3,4,5,6,7

Features

- rugged welded case, hermetic
- other standard and custom PLP models available with wide selection of fco

Applications

- test equipment
- lab use
- transmitters/receivers
- military/hi-rel applications



CASE STYLE: A01
PRICE: \$13.70 ea. QTY (1-9)

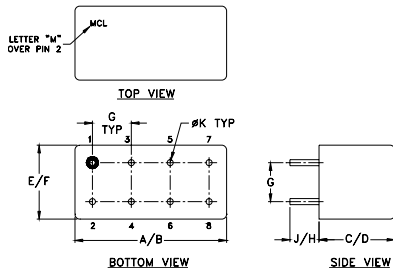
+ RoHS compliant in accordance with EU Directive (2002/95/EC)

The +Suffix has been added in order to identify RoHS Compliance. See our web site for RoHS Compliance methodologies and qualifications.

Low Pass Filter Electrical Specifications

PASSBAND (MHz)	fco (MHz) Nom.	STOPBAND (MHz)		VSWR (:1)	
		(loss > 20 dB)	(loss > 40 dB)	Passband Typ.	Stopband Typ.
DC-60	67	90-117	117-300	1.7	18

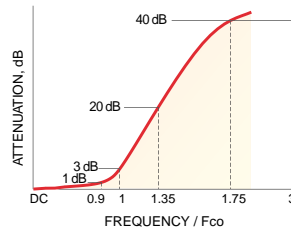
Outline Drawing



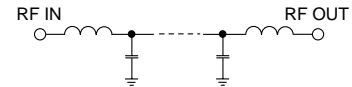
Outline Dimensions (inch/mm)

A	B	C	D	E	F
.770	.800	.385	.400	.370	.400
19.56	20.32	9.78	10.16	9.40	10.16
G	H	J	K	wt	
.200	.20	.14	.031	grams	
5.08	5.08	3.56	0.79	5.2	

typical frequency response

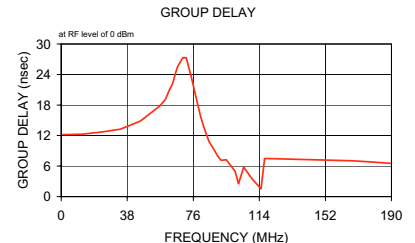
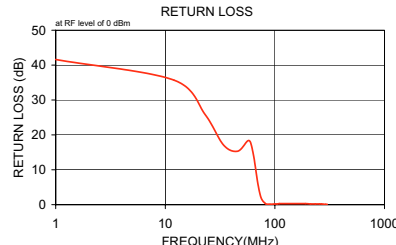
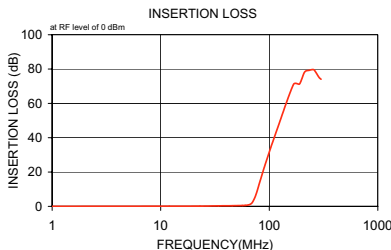


electrical schematic



Typical Performance Data

Frequency (MHz)	Insertion Loss (dB)		Return Loss (dB)	Frequency (MHz)	Group Delay (nsec)
	\bar{x}	σ			
1.00	0.02	0.1	41.6	1.00	12.18
12.00	0.09	0.1	35.7	12.00	12.27
23.00	0.14	0.1	25.9	23.00	12.70
34.00	0.30	0.1	17.1	34.00	13.24
45.50	0.38	0.1	15.3	45.50	14.84
56.50	0.48	0.1	18.3	56.50	17.75
60.00	0.57	0.1	17.8	60.00	19.13
64.00	0.81	0.1	13.9	62.00	20.78
67.00	1.27	0.2	9.8	64.00	22.11
70.00	2.40	0.5	5.9	66.00	24.56
75.00	6.44	0.7	1.9	67.00	25.58
82.00	14.32	0.6	0.3	70.00	27.33
85.00	17.61	0.6	0.1	72.00	27.29
88.00	20.73	0.5	0.1	75.00	23.25
90.00	22.72	0.5	0.1	80.00	16.05
92.00	24.63	0.4	0.1	82.00	13.76
100.00	31.63	0.3	0.2	85.00	10.85
105.00	35.63	0.3	0.2	88.00	9.20
110.00	39.22	0.3	0.3	90.00	8.00
115.00	42.79	0.3	0.3	92.00	7.14
117.00	44.09	0.3	0.3	95.00	7.25
167.00	71.03	2.8	0.3	100.00	4.98
189.50	71.25	4.9	0.3	102.00	2.55
211.50	78.21	8.2	0.2	105.00	5.78
233.50	79.29	6.9	0.2	110.00	3.41
255.50	79.68	7.6	0.2	115.00	1.56
267.00	78.34	9.9	0.2	117.00	7.50
278.00	76.60	3.1	0.1	167.00	7.04
289.00	75.01	2.8	0.1	178.00	6.83
300.00	74.09	4.1	0.1	189.50	6.54



P.O. Box 350166, Brooklyn, New York 11235-0003 (718) 934-4500 Fax (718) 332-4661 For detailed performance specs & shopping online see Mini-Circuits web site



The Design Engineers Search Engine Provides ACTUAL Data Instantly From MINI-CIRCUITS At: www.minicircuits.com

RF/IF MICROWAVE COMPONENTS