

Low Pass Filter

PLP-250+

50Ω DC to 225 MHz

Maximum Ratings

| | |
|-----------------------|----------------|
| Operating Temperature | -55°C to 100°C |
| Storage Temperature | -55°C to 100°C |
| RF Power Input | 0.5W max. |

Pin Connections

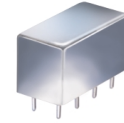
| | |
|-------------|-------------|
| INPUT | 1 |
| OUTPUT | 8 |
| GROUND | 2,3,4,5,6,7 |
| CASE GROUND | 2,3,4,5,6,7 |

Features

- rugged welded case, hermetic
- other standard and custom PLP models available with wide selection of fco

Applications

- test equipment
- lab use
- transmitters/receivers
- military/hi-rel applications



CASE STYLE: A01
PRICE: \$13.70 ea. QTY (1-9)

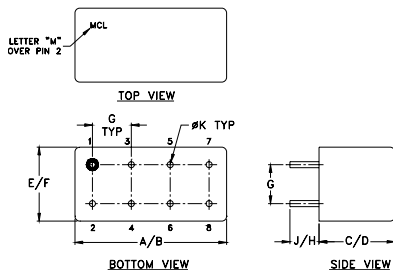
+ RoHS compliant in accordance with EU Directive (2002/95/EC)

The +Suffix has been added in order to identify RoHS Compliance. See our web site for RoHS Compliance methodologies and qualifications.

Low Pass Filter Electrical Specifications

| PASSBAND (MHz) | fco (MHz) Nom. | STOPBAND (MHz) | | VSWR (:1) | |
|----------------|----------------|----------------|----------------|---------------|---------------|
| | | (loss > 20 dB) | (loss > 40 dB) | Passband Typ. | Stopband Typ. |
| DC-225 | 250 | 320-400 | 400-1200 | 1.7 | 18 |

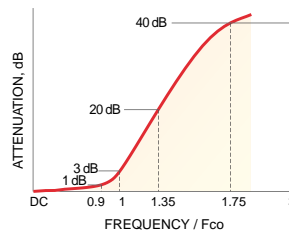
Outline Drawing



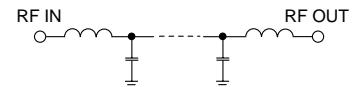
Outline Dimensions (inch/mm)

| A | B | C | D | E | F |
|-------|-------|------|-------|-------|-------|
| .770 | .800 | .385 | .400 | .370 | .400 |
| 19.56 | 20.32 | 9.78 | 10.16 | 9.40 | 10.16 |
| G | H | J | K | wt | |
| .200 | .20 | .14 | .031 | grams | |
| 5.08 | 5.08 | 3.56 | 0.79 | 5.2 | |

typical frequency response

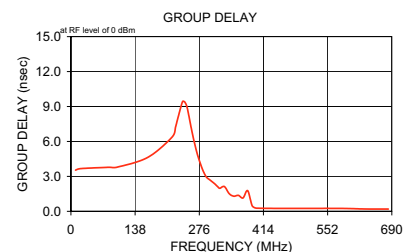
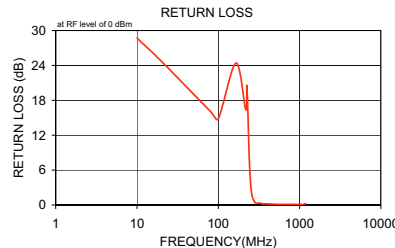


electrical schematic



Typical Performance Data

| Frequency (MHz) | Insertion Loss (dB) | | Return Loss (dB) | Frequency (MHz) | Group Delay (nsec) |
|-----------------|---------------------|----------|------------------|-----------------|--------------------|
| | \bar{x} | σ | | | |
| 10.00 | 0.03 | 0.1 | 28.7 | 10.00 | 3.54 |
| 20.00 | 0.03 | 0.1 | 24.7 | 20.00 | 3.66 |
| 80.00 | 0.20 | 0.1 | 16.1 | 80.00 | 3.78 |
| 100.00 | 0.28 | 0.1 | 14.8 | 100.00 | 3.80 |
| 165.00 | 0.27 | 0.1 | 24.4 | 165.00 | 4.63 |
| 217.50 | 0.60 | 0.1 | 16.4 | 217.50 | 6.37 |
| 225.00 | 0.64 | 0.1 | 20.4 | 225.00 | 7.25 |
| 240.00 | 1.59 | 0.3 | 8.3 | 230.00 | 8.00 |
| 250.00 | 3.87 | 0.6 | 3.6 | 240.00 | 9.42 |
| 260.00 | 7.27 | 0.9 | 1.6 | 245.00 | 9.37 |
| 280.00 | 14.62 | 1.0 | 0.5 | 250.00 | 8.91 |
| 300.00 | 21.27 | 1.1 | 0.3 | 260.00 | 6.90 |
| 310.00 | 24.28 | 1.2 | 0.3 | 270.00 | 5.18 |
| 315.00 | 25.71 | 1.2 | 0.3 | 280.00 | 3.91 |
| 320.00 | 27.12 | 1.3 | 0.3 | 290.00 | 3.02 |
| 330.00 | 29.77 | 1.3 | 0.3 | 300.00 | 2.66 |
| 350.00 | 34.87 | 1.6 | 0.2 | 310.00 | 2.33 |
| 370.00 | 39.35 | 1.9 | 0.2 | 315.00 | 2.14 |
| 380.00 | 41.63 | 2.0 | 0.2 | 320.00 | 1.98 |
| 390.00 | 43.91 | 2.3 | 0.2 | 330.00 | 2.13 |
| 400.00 | 46.09 | 2.7 | 0.2 | 340.00 | 1.53 |
| 580.00 | 69.80 | 3.0 | 0.1 | 350.00 | 1.30 |
| 682.50 | 69.02 | 1.5 | 0.1 | 360.00 | 1.37 |
| 785.00 | 69.27 | 2.4 | 0.1 | 370.00 | 1.15 |
| 890.00 | 69.72 | 4.5 | 0.1 | 380.00 | 1.78 |
| 992.50 | 70.16 | 5.1 | 0.1 | 390.00 | 0.46 |
| 1045.00 | 73.29 | 6.6 | 0.1 | 400.00 | 0.27 |
| 1097.50 | 70.40 | 5.6 | 0.0 | 580.00 | 0.25 |
| 1147.50 | 71.08 | 3.9 | 0.2 | 630.00 | 0.20 |
| 1200.00 | 71.31 | 2.1 | 0.2 | 682.50 | 0.20 |



P.O. Box 350166, Brooklyn, New York 11235-0003 (718) 934-4500 Fax (718) 332-4661 For detailed performance specs & shopping online see Mini-Circuits web site



The Design Engineers Search Engine Provides ACTUAL Data Instantly From MINI-CIRCUITS At: www.minicircuits.com

RF/IF MICROWAVE COMPONENTS

REV. B
M108294
PLP-250+
071031