

Plug-In

# Low Pass Filter

## PLP-1200+

50Ω DC to 1000 MHz

### Maximum Ratings

Operating Temperature	-55°C to 100°C
Storage Temperature	-55°C to 100°C
RF Power Input	0.5W max.

### Pin Connections

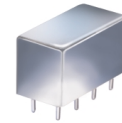
INPUT	1
OUTPUT	8
GROUND	2,3,4,5,6,7
CASE GROUND	2,3,4,5,6,7

### Features

- rugged welded case, hermetic
- other standard and custom PLP models available with wide selection of fco

### Applications

- test equipment
- lab use
- transmitters/receivers
- military/hi-rel applications



CASE STYLE: A01  
PRICE: \$13.70 ea. QTY (1-9)

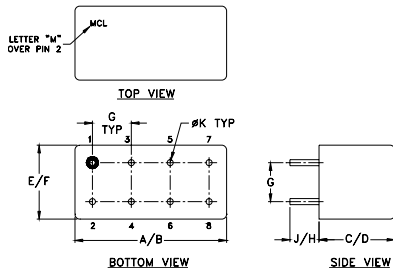
**+ RoHS compliant in accordance with EU Directive (2002/95/EC)**

The +Suffix has been added in order to identify RoHS Compliance. See our web site for RoHS Compliance methodologies and qualifications.

### Low Pass Filter Electrical Specifications

PASSBAND (MHz)	fco (MHz) Nom.	STOPBAND (MHz)		VSWR (:1)	
		(loss > 20 dB)	(loss > 40 dB)	Passband Typ.	Stopband Typ.
DC-1000	1200	1620-2100	2100-2500	1.7	18

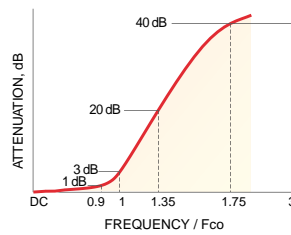
### Outline Drawing



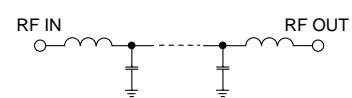
### Outline Dimensions (inch/mm)

A	B	C	D	E	F
.770	.800	.385	.400	.370	.400
19.56	20.32	9.78	10.16	9.40	10.16
G	H	J	K	wt	
.200	.20	.14	.031	grams	
5.08	5.08	3.56	0.79	5.2	

### typical frequency response

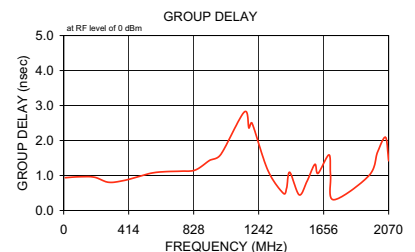
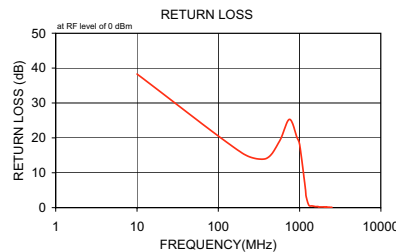
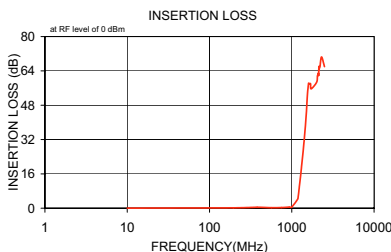


### electrical schematic



### Typical Performance Data

Frequency (MHz)	Insertion Loss (dB)		Return Loss (dB)	Frequency (MHz)	Group Delay (nsec)
	$\bar{x}$	$\sigma$			
10.00	0.03	0.0	38.3	10.00	0.94
195.00	0.16	0.1	15.7	100.00	0.96
380.00	0.43	0.1	14.0	195.00	0.95
565.00	0.24	0.1	19.0	285.00	0.81
750.00	0.29	0.1	25.3	380.00	0.85
930.00	0.48	0.1	20.1	470.00	0.96
1000.00	0.55	0.1	18.1	565.00	1.07
1180.00	4.25	1.9	5.3	655.00	1.11
1200.00	5.69	2.2	3.4	750.00	1.12
1300.00	17.67	3.0	0.7	840.00	1.16
1420.00	32.19	3.6	0.5	930.00	1.43
1500.00	43.83	5.7	0.4	1000.00	1.60
1550.00	53.20	7.9	0.3	1150.00	2.81
1600.00	58.27	7.5	0.3	1180.00	2.36
1620.00	57.94	6.7	0.3	1200.00	2.49
1690.00	58.01	8.4	0.3	1300.00	1.15
1720.00	55.64	6.2	0.2	1400.00	0.50
2000.00	58.68	3.8	0.2	1420.00	0.64
2050.00	61.62	3.9	0.1	1440.00	1.09
2070.00	62.15	5.5	0.1	1500.00	0.45
2100.00	62.95	5.6	0.1	1550.00	0.84
2110.00	62.89	5.0	0.1	1600.00	1.32
2120.00	61.95	4.1	0.1	1620.00	1.06
2130.00	64.71	5.4	0.1	1690.00	1.59
2140.00	66.13	8.4	0.1	1700.00	1.01
2150.00	64.30	6.7	0.1	1720.00	0.31
2160.00	65.10	7.9	0.1	1945.00	1.00
2200.00	65.98	8.1	0.1	2000.00	1.67
2300.00	70.50	9.9	0.1	2050.00	2.09
2500.00	65.98	4.1	0.1	2070.00	1.42



P.O. Box 350166, Brooklyn, New York 11235-0003 (718) 934-4500 Fax (718) 332-4661 For detailed performance specs & shopping online see Mini-Circuits web site



The Design Engineers Search Engine Provides ACTUAL Data Instantly From MINI-CIRCUITS At: [www.minicircuits.com](http://www.minicircuits.com)

RF/IF MICROWAVE COMPONENTS

REV. B  
M108294  
PLP-1200+  
071031