

Plug-In Low Pass Filter

PLP-100+

50Ω DC to 98 MHz

Maximum Ratings

Operating Temperature	-55°C to 100°C
Storage Temperature	-55°C to 100°C
RF Power Input	0.5W max.

Pin Connections

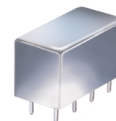
INPUT	1
OUTPUT	8
GROUND	2,3,4,5,6,7
CASE GROUND	2,3,4,5,6,7

Features

- rugged welded case, hermetic
- other standard and custom PLP models available with wide selection of fco

Applications

- test equipment
- lab use
- transmitters/receivers
- military/hi-rel applications



CASE STYLE: A01
PRICE: \$13.70 ea. QTY (1-9)

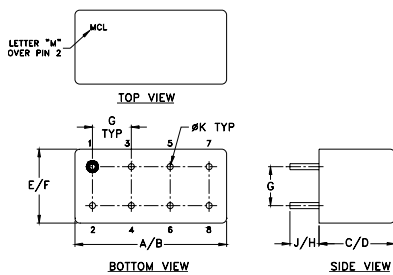
+ RoHS compliant in accordance with EU Directive (2002/95/EC)

The +Suffix has been added in order to identify RoHS Compliance. See our web site for RoHS Compliance methodologies and qualifications.

Low Pass Filter Electrical Specifications

PASSBAND (MHz)	fco (MHz) Nom.	STOPBAND (MHz)		VSWR (:1)	
		(loss > 20 dB)	(loss > 40 dB)	Passband Typ.	Stopband Typ.
DC-98	108	146-189	189-400	1.7	18

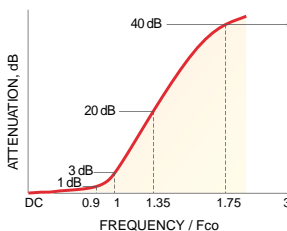
Outline Drawing



Outline Dimensions (inch/mm)

A	B	C	D	E	F
.770	.800	.385	.400	.370	.400
19.56	20.32	9.78	10.16	9.40	10.16
G	H	J	K	wt	
.200	.20	.14	.031	grams	
5.08	5.08	3.56	0.79	5.2	

typical frequency response

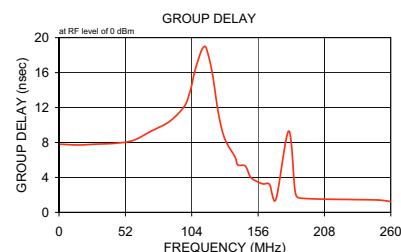
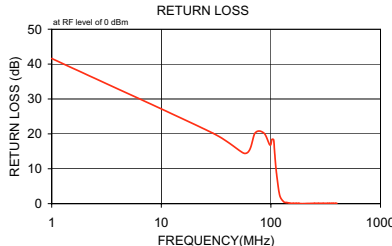


electrical schematic



Typical Performance Data

Frequency (MHz)	Insertion Loss (dB)		Return Loss (dB)	Frequency (MHz)	Group Delay (nsec)
	\bar{x}	σ			
1.00	0.02	0.1	41.6	1.00	7.802
29.50	0.16	0.1	20.2	15.00	7.718
58.00	0.34	0.1	14.4	29.50	7.812
72.00	0.31	0.1	20.3	43.50	7.901
86.50	0.41	0.1	20.2	58.00	8.226
98.00	0.58	0.1	16.8	72.00	9.283
102.00	0.62	0.1	18.4	86.50	10.402
106.00	0.75	0.1	18.3	98.00	12.091
108.00	0.93	0.2	15.0	102.00	13.505
112.00	1.72	0.5	9.3	104.00	14.551
120.00	5.98	1.3	2.5	106.00	15.904
130.01	13.62	1.3	0.6	108.00	16.952
138.02	19.37	1.2	0.3	112.00	18.647
140.02	20.73	1.2	0.3	115.00	18.923
146.02	24.55	1.2	0.2	120.00	16.027
150.03	26.95	1.1	0.1	125.00	11.256
160.03	32.54	1.2	0.1	130.00	8.381
170.04	37.64	1.2	0.1	138.00	6.335
180.04	42.35	1.2	0.1	140.00	5.440
185.04	44.43	1.3	0.0	146.00	5.302
189.05	46.24	1.4	0.0	150.00	4.068
250.07	67.20	3.6	0.1	155.00	3.545
271.58	76.41	8.4	0.1	160.00	3.249
300.08	75.73	6.4	0.1	165.00	3.192
330.08	75.45	3.9	0.1	170.00	1.495
343.07	73.72	2.6	0.1	180.00	9.308
360.08	75.87	4.3	0.1	185.00	2.440
371.58	77.51	9.8	0.1	189.00	1.634
390.08	79.32	7.8	0.1	250.00	1.412
400.08	75.26	2.4	0.1	260.00	1.228



P.O. Box 350166, Brooklyn, New York 11235-0003 (718) 934-4500 Fax (718) 332-4661 For detailed performance specs & shopping online see Mini-Circuits web site



The Design Engineers Search Engine Provides ACTUAL Data Instantly From MINI-CIRCUITS At: www.minicircuits.com

RF/IF MICROWAVE COMPONENTS

REV. A
M108294
PLP-100+
071031